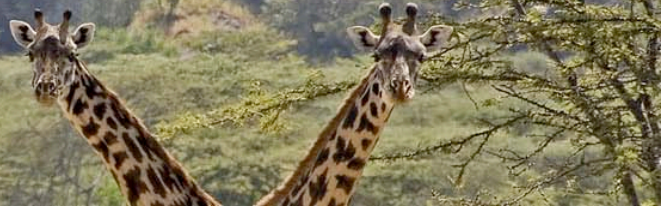


Sarara Camp

Namunyak, Mathews Range



Sarara is found within the lands of the Namunyak Wildlife Conservation Trust. An area of approximately 850,000 acres, lies folded around the southern corner of the fabled Mathews Mountain range of northern Kenya. This is home of the proud Samburu people, a group of semi-nomadic pastoralists who have for long shown tolerance for the wildlife that co-exists alongside their cattle. The Trust was set up in 1995 specifically to promote wildlife conservation and to assist the local community to benefit from tourism, in return for protecting the wildlife species living on their land. Sarara is hosted by Piers and Hilary Bastard, Tishie Littlewood, and their dedicated and friendly team.

Accommodation

Six spacious tents which can all be adjusted for single, twin, double or triples, each with ensuite bathrooms and open air showers.

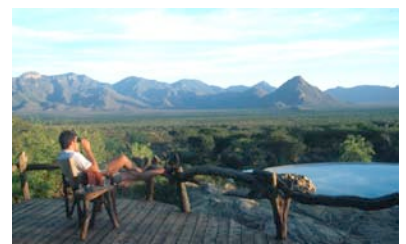
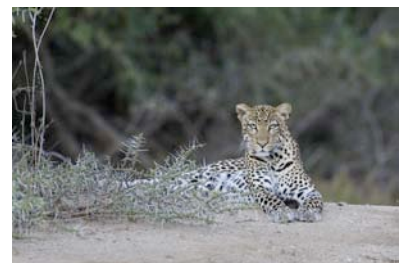
Solar lighting in the tents. No hair dryers in tents. Mineral water in tents.

Lodge Amenities

- Large sitting room
- A natural rock swimming pool overlooking a wildlife waterhole
- Laundry services provided
- Gift shop
- Electrical items can be charged from a central point – no power sockets in the tents
- No mobile phone networks
- Wifi internet access
- No credit card facilities

Meal Plan

Full board accommodation, house-wines, beers & soft drinks. Special dietary requirements can be accommodated with prior notice.





Included Activities

- Shared game drives in custom built, open 4x4 vehicles with knowledgeable guides
- Escorted game walks with our expert field scouts
- Hiking into the Mathews forest
- Climbing to the top of Lolokwe with donkeys
- Fly camping safaris with camels along the wide sand “luggas”
- Bush picnics and sundowners
- Visits to the Samburu Singing wells (only in the dry season)

Access

- Daily scheduled flight to Nanyuki airstrip departing from Wilson Airport. Connecting private charter to Namunyak airstrip.
- By private charter flight to Namunyak airstrip
- A full day drive from Nairobi via Archer’s Post

Seasons

Sarara Camp will be closed in April, May and November.

