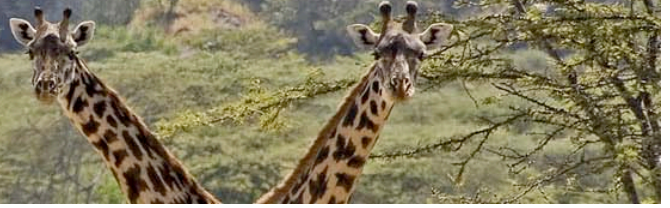


# Lewa Wilderness

## Lewa Wildlife Conservancy



Lewa Wilderness is situated within one of Kenya's major private conservation successes, the Lewa Wildlife Conservancy, at the foot of Mt. Kenya. Lewa Downs has been the Craig family home since 1924 when the Craigs came from England and began raising cattle here. Lewa Wilderness is the original family home of the Craigs and is still home to Will and Emma Craig who host with their team of professional guides.

The Lewa Wildlife Conservancy has three extraordinary assets:

- Beautiful countryside and as good a wildlife experience as anywhere in Africa.
- Many of the world's endangered species – Black and White Rhino, Grevy's Zebra and Sitatunga.
- A major commitment to community development and participation.

### Accommodation

Nine comfortable thatched cottages with spacious ensuite bathrooms, fireplaces in the sitting areas and verandahs with spectacular views.

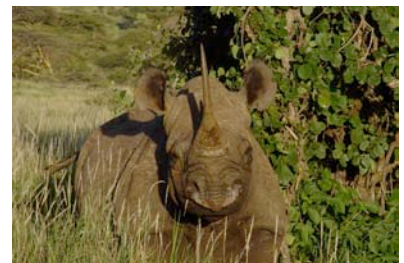
Lighting is by a 240V generator, run morning and evening hours. Power outlets in tents so phone/camera batteries can be charged in the rooms. Travel size hair dryers can be used in the cottages – guests are recommended to bring own and management needs to be informed. There is also a mini-bar in each room.

### Lodge Amenities

- Large sitting room with fireplace
- Horizon salt-water swimming pool
- Tennis court
- Laundry services provided
- Gift shop
- Internet access for guests – charged at US\$2/minute but only when the generator is on
- Mobile phone networks available
- Safe box in the main office
- Massage (extra charge)
- Credit card facilities – Amex, Mastercard and Visa

### Meal Plan

Full board accommodation, house-wines, beers & soft drinks. Champagne excluded. Special dietary requirements can be accommodated with prior notice.





## Included Activities

- Shared game drives in open 4x4 vehicles with knowledgeable guides, both during the day and at night
- Game walks with an experienced guide
- Horse riding for both experienced riders and novices (hats and English saddles provided)
- Camel treks
- Visits to prehistoric sites
- Cultural visits with local communities
- Farm and craft tours
- Swimming

## Optional Extras

- Scenic flights in biplane
- Il'Ngwesi cultural village visit
- Massages



## Access

- Daily scheduled flight (via Nanyuki) departing Wilson Airport
- By private charter flight, directly to Lewa Downs airstrip
- Lewa Downs airstrip is approximately 30 minutes drive from Lewa Safari Camp
- By road, five hour drive from Nairobi.

## Seasons

Lewa Wilderness is closed in November.